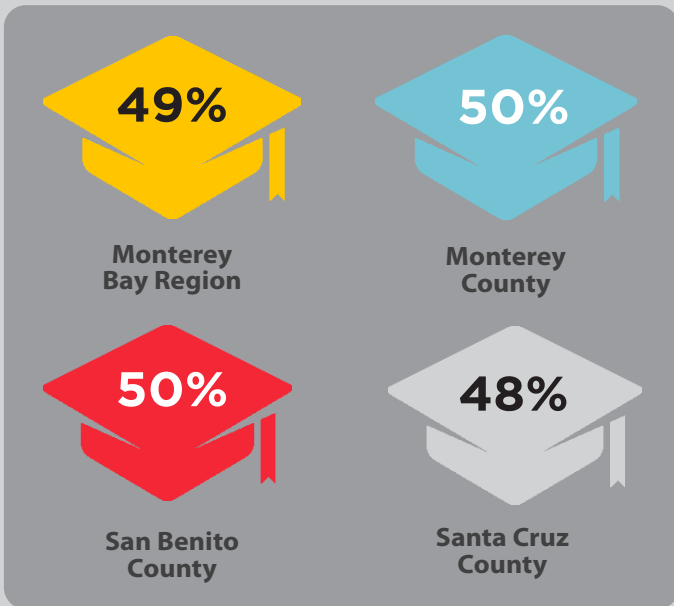


# Monterey Bay Region Higher Education

## High School Grads Meeting UC-CSU Requirements



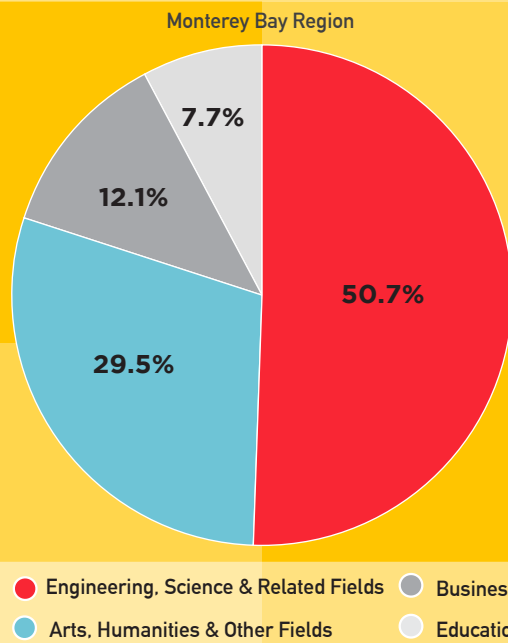
2019-2020 School Year

## Highest Education Attainment

	Monterey County	San Benito County	Santa Cruz County
Graduate/Professional	9.9%	6.1%	17.1%
Bachelor's	14.8%	13.6%	23.8%
Associate's	8.2%	10.1%	8.7%
Some College/No Degree	18.3%	25.9%	21.3%
High School Graduate*	20.3%	15.5%	24.8%
9th-12th Grade No Diploma	8.9%	6.4%	4.7%
Less than 9th Grade	19.6%	13.1%	9.0%

Figures as of 2019

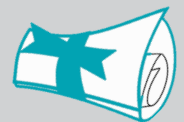
## Total Fields of Bachelor Degrees



Population 25 years and over with a Bachelor's degree or higher

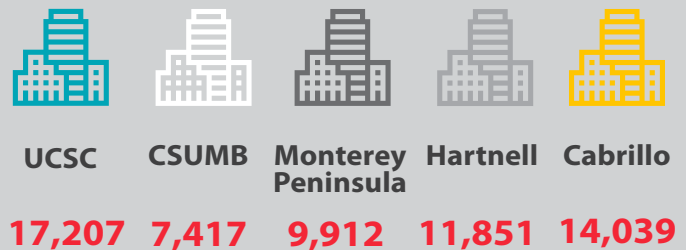
## Top Bachelor Degrees

1. Business (12%)
2. Social Sciences (12%)
3. Agricultural & Environmental Sciences (9%)
4. Education (8%)
5. Science & Engineering (7%)



Figures as of 2019

## Undergraduate Enrollment



Figures as of Fall 2020



**Monterey Bay**  
ECONOMIC PARTNERSHIP

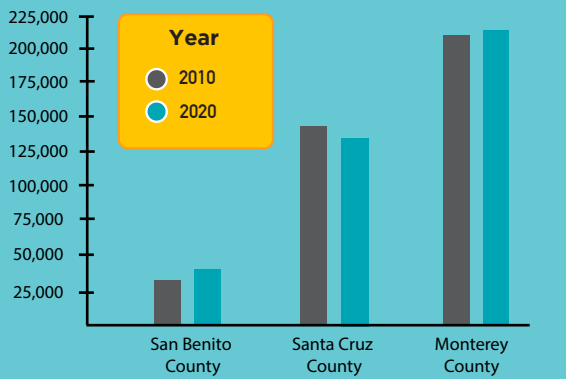
We all have a role to play. Many indicators can't be solved without addressing drivers of another.

# Monterey Bay Region Workforce



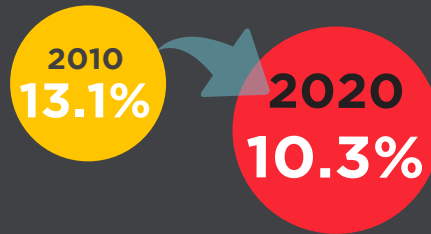
## Overall Workforce

Monterey Bay Region  
**2010:**  
**385,400**  
**2020:**  
**378,600**



## Unemployment is Down Throughout the Region

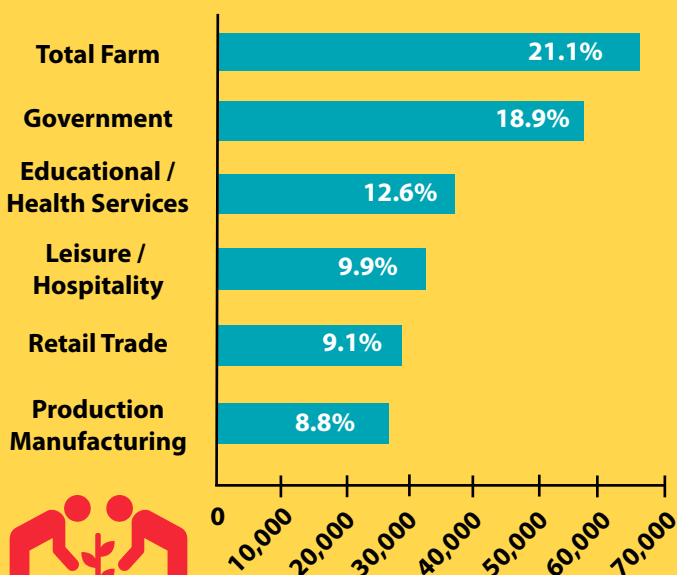
Monterey Bay Region



	2010	2020
San Benito County	15.1%	9.9%
Santa Cruz County	13.3%	9.5%
Monterey County	12.7%	10.8%

## Employment by Industry

Monterey Bay Region



Figures as of 2020

## Projections by Industry

Ten Year Growth Projections for the period of 2018 - 2028

