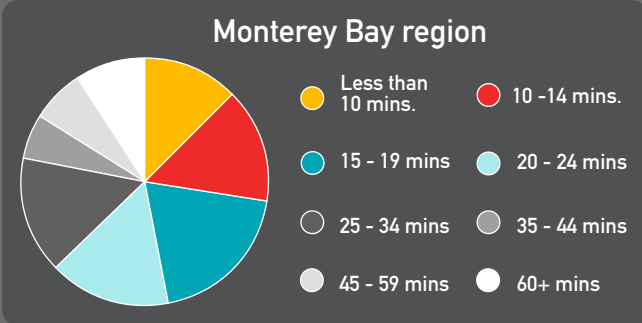


# Monterey Bay Region Transportation

## Travel time to work\*



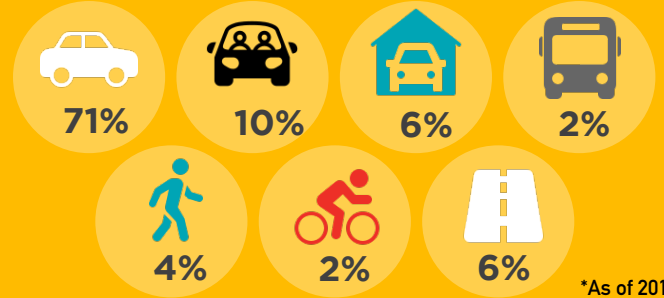
## Mean travel time (in mins.)

	2011	2018
Monterey County	22	22.7
Santa Cruz County	25.7	27
San Benito County	28.9	35.3

\*As of 2018

## Means of transportation\*

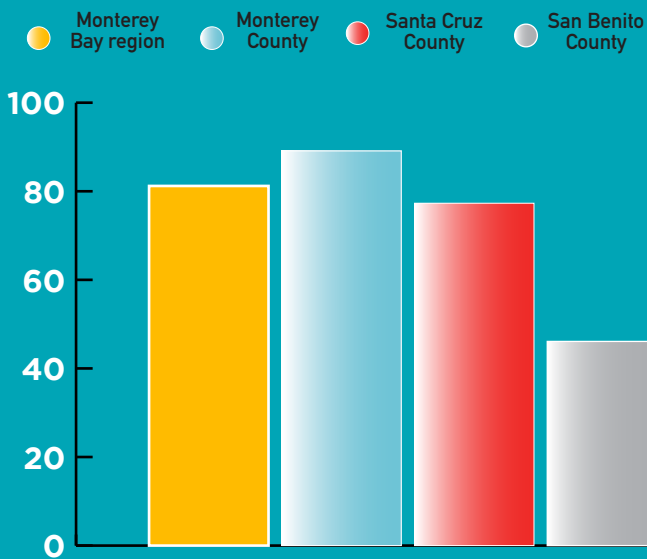
Monterey Bay region



\*As of 2018

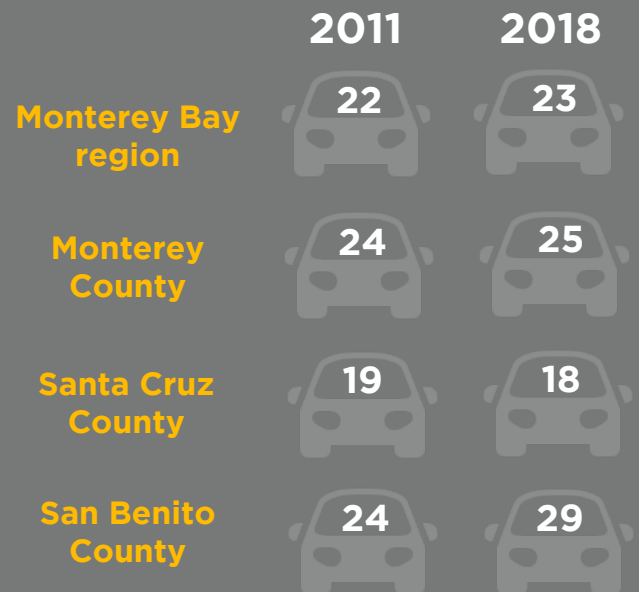
	Monterey County	Santa Cruz County	San Benito County
Drove alone	71%	69%	80%
Carpooled	10%	9%	13%
Worked from home	4%	8%	4%
Public transportation	2%	3%	1%
Walked	3%	5%	2%
Biked	1%	4%	0%
Other	10%	3%	1%

## Percentage of workers working within county of residence\*



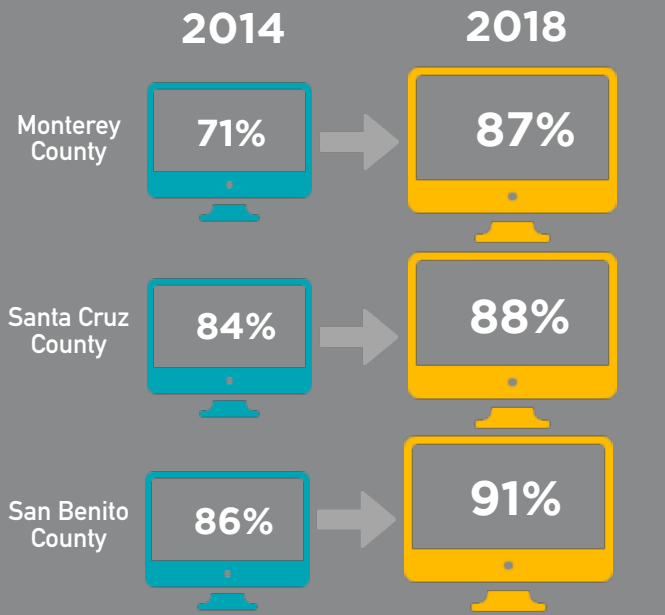
\*As of 2018

## Daily vehicle miles traveled per capita

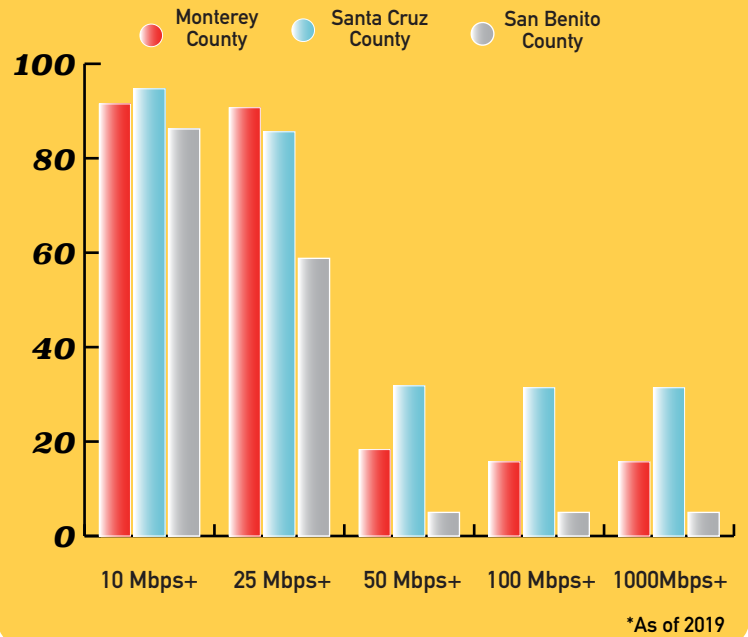


# Monterey Bay Region Technology

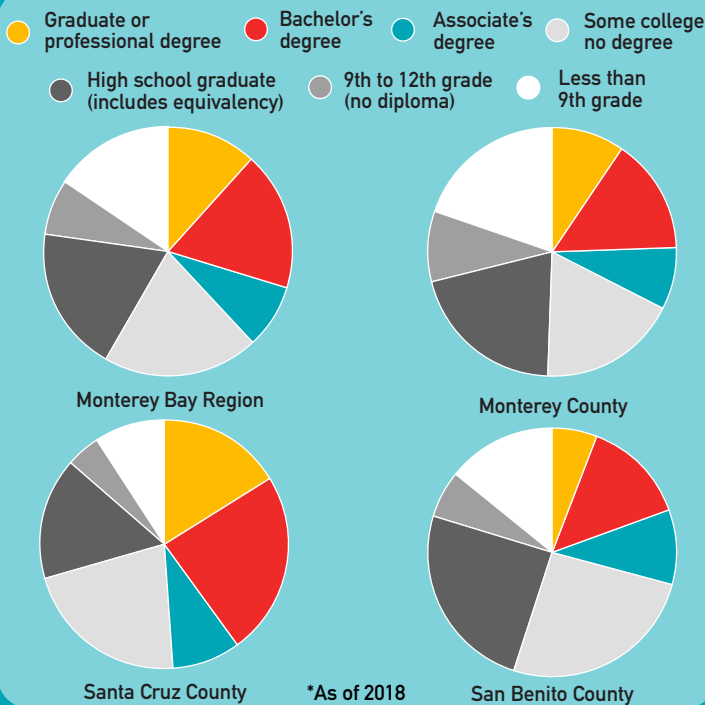
## Households with internet connectivity is up



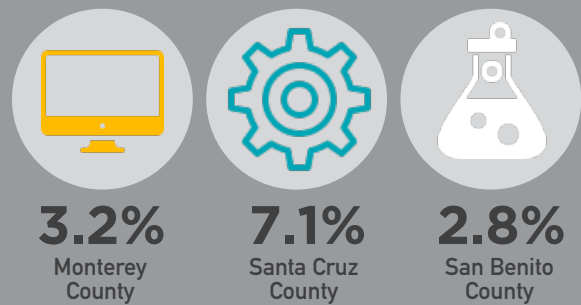
## Wireline internet speed availability to the population



## Highest education attainment



## Percentage of workers with computer, engineering, and science occupations\*



### Rank

Ranked out of 58 California counties. Lower number rank means higher percentage of occupations are Computer, Engineering and Science Occupations

Monterey County **37**

Santa Cruz County **11**

San Benito County **46**

\*As of 2018