

Monterey Bay Health & Wellness



Health factors*

Health outcomes*

36

Monterey County

22

17

Santa Cruz County

12

25

San Benito County

20

A higher ranking represents worse outcomes, a lower rank is desirable.

Health factors represent what influences the health of a county.

Health outcomes represents how healthy a county is and is reflective of two types of health outcomes: length of life and quality of life.

*As of 2020

*Out of 58 counties

Health care and social assistance*



11.6%
Monterey Bay region



11%
Monterey County



12.4%
Santa Cruz County



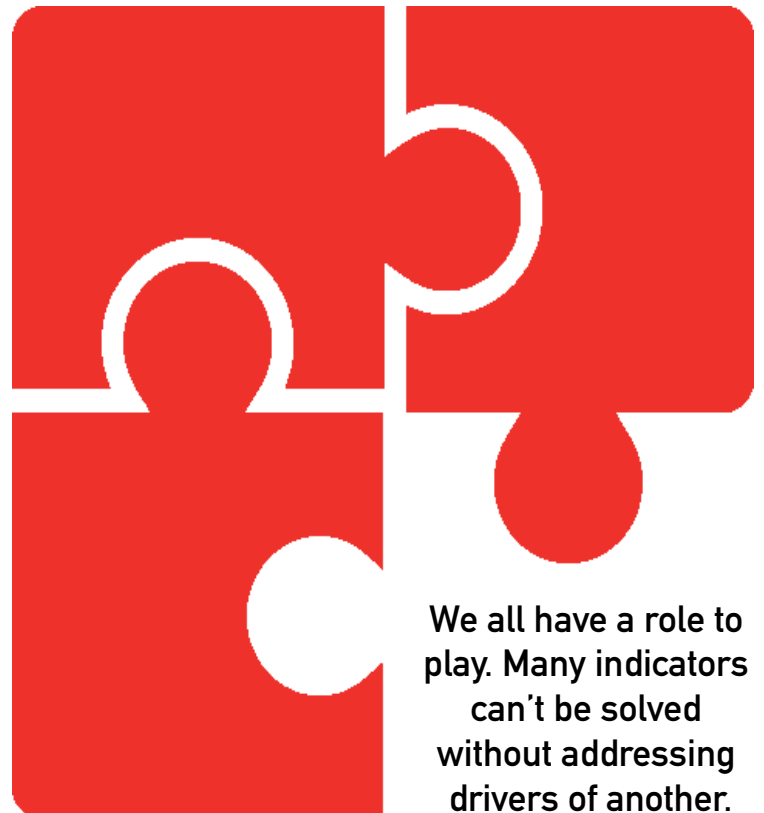
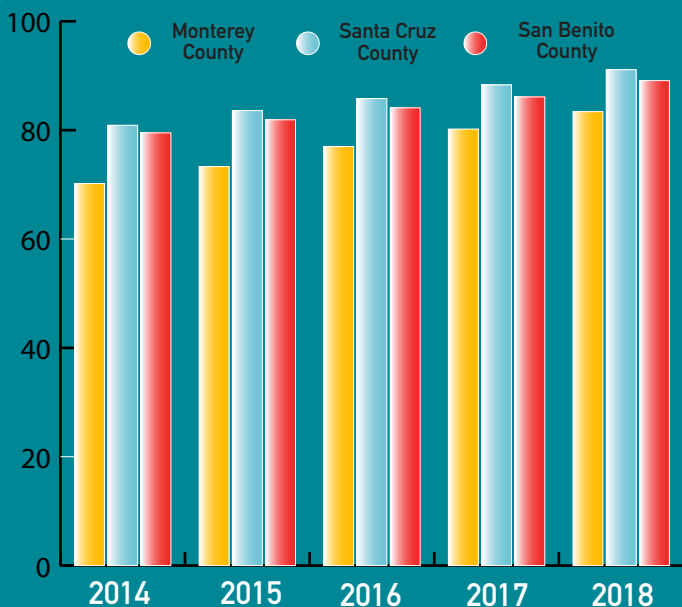
11.4%
San Benito County

*As of 2018

*Percentage of total employment

Population with insurance coverage

(Ages 19 - 64)



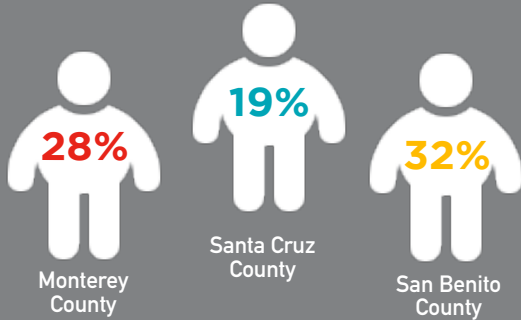
We all have a role to play. Many indicators can't be solved without addressing drivers of another.



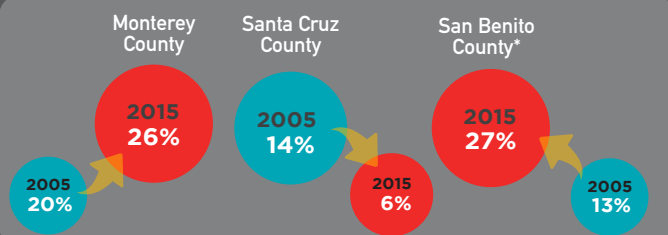
Monterey Bay Health & Wellness

Adult obesity (as of 2016)

Adult obesity is defined as the percentage of adults that report a BMI greater than or equal to 30.

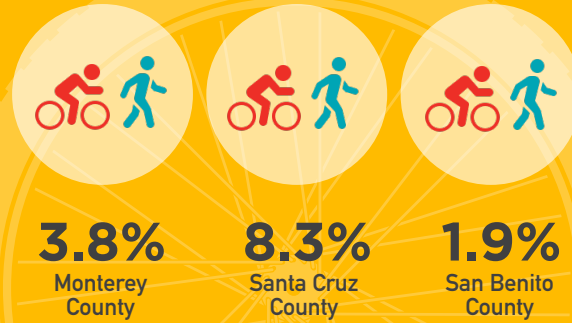


Youth obesity (ages 12-17 years)



*San Benito County data for 2015 is not available.

Population biking or walking to work*



Rank*

Lower county rank represents a higher percentage of workers that bike or walk to work.



(*Out of 58 counties)

*As of 2018

Percentage of families whose income is below poverty level*

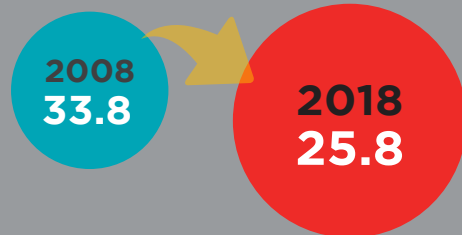
- Monterey Bay region
- Monterey County
- San Benito County
- Santa Cruz County



*As of 2018

Crime is down throughout the region

Monterey Bay region



Crime rate per every 1000 residents

| | 2008 | 2018 |
|-------------------|------|------|
| Monterey County | 32.9 | 24.3 |
| Santa Cruz County | 35.3 | 30.9 |
| San Benito County | 26.8 | 13.4 |

