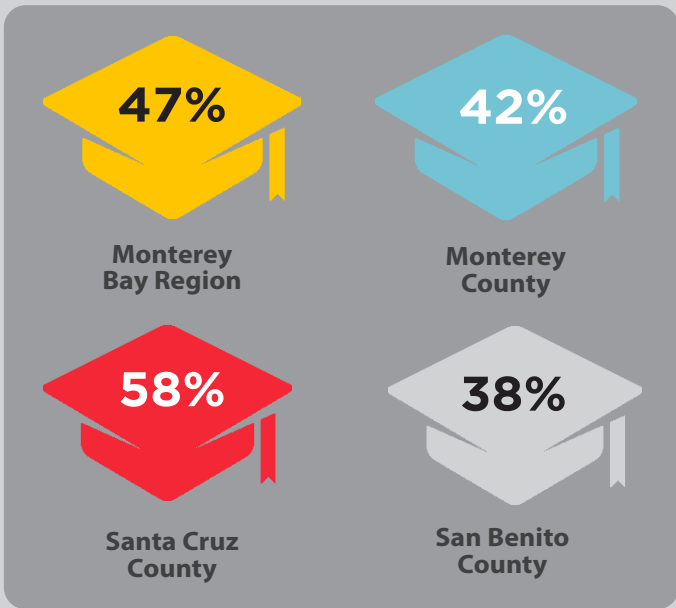


Monterey Bay Region Higher Education



High school grads meeting UC-CSU requirements*



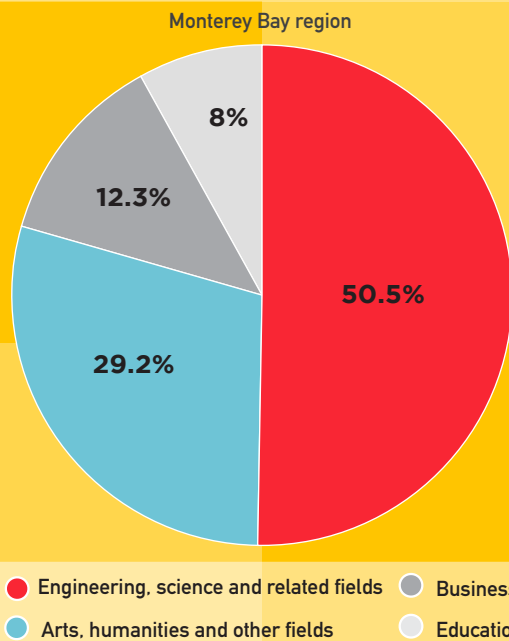
*2016 - 2017 academic year

Highest education attainment*

	Monterey County	Santa Cruz County	San Benito County
Graduate/professional	9.2%	15.6%	5.9%
Bachelor's	14.4%	23.4%	13%
Associate's	8.1%	9.2%	8.2%
Some college/no degree	18.8%	22.6%	26.5%
High school graduate	20.4%	15.5%	24.6%
9th-12th grade no diploma	9.7%	4.9%	7.9%
Less than 9th grade	19.4%	8.8%	13.8%

*as of 2016

Total fields of bachelor degrees*

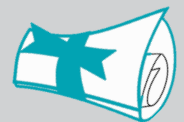


*as of 2016

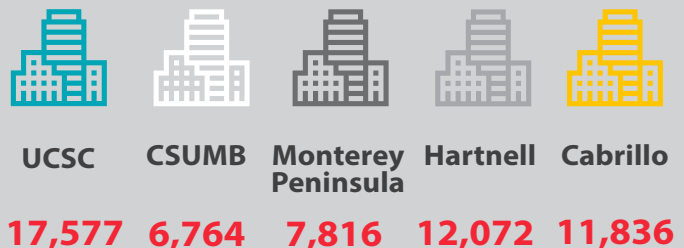
Population 25 years and over with a Bachelor's degree or higher

Top Bachelor's degrees

1. Business (12%)
2. Social Sciences (12%)
3. Agricultural & Environmental Sciences (9%)
4. Education (8%)
5. Liberal Arts & History (8%)



Undergraduate enrollment



*as of 2016



Monterey Bay
ECONOMIC PARTNERSHIP

We all have a role to play. Many indicators can't be solved without addressing drivers of another.

Monterey Bay Region Workforce



Overall workforce

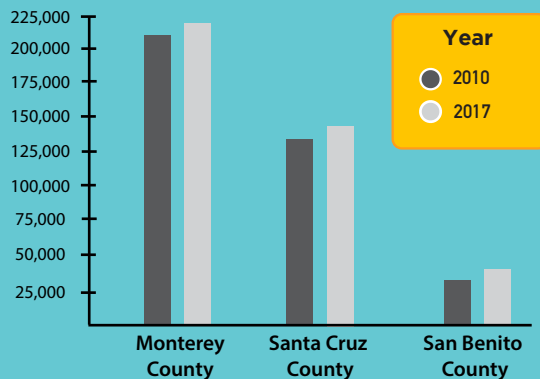
Monterey Bay region

2010:

385,400

2017:

394,100



Unemployment is down throughout the region

Monterey Bay region

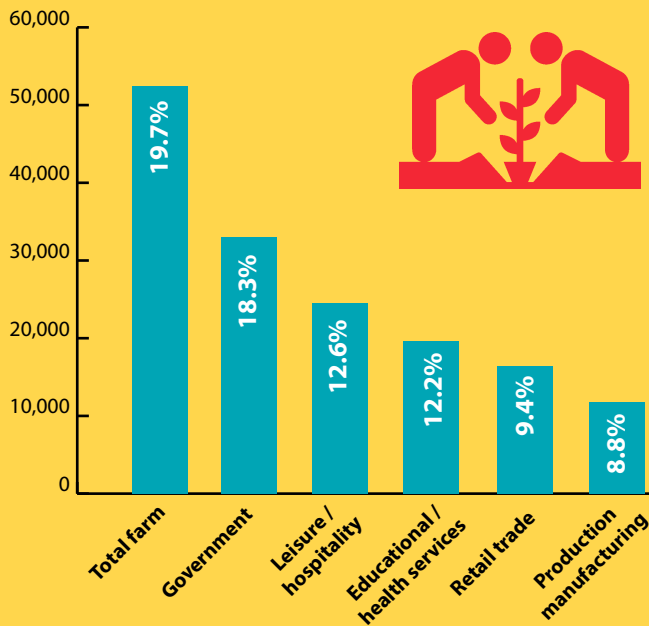
2010
13.1%

2017
6.5%

	2010	2017
Monterey County	12.7%	7.2%
Santa Cruz County	13.3%	5.7%
San Benito County	15.1%	5.9%

Employment by Industry*

Monterey Bay Region



*as of 2017

Projections by industry

Ten year growth projections for the period of 2014 - 2024

