

Monterey Bay Region Housing Story



Median home values

Median rent

\$543,300 Monterey County **\$2,477**

\$827,100 Santa Cruz County **\$2,994**

\$514,600 San Benito County **\$2,310**



US Average
\$216,700



US Average
\$1440

Affordable homes

Percentage of homes on the market that are **affordable to a family earning the median local income**



2008
20%

2018
12%

Santa Cruz-Watsonville



2008
26%

2018
11%

Salinas

Renter occupied housing



46%
Monterey Bay Region



50%
Monterey County



42%
Santa Cruz County



38%
San Benito County

Renters spending more than 30% of their income on rent



58%
Monterey Bay Region



56%
Monterey County



60%
Santa Cruz County



53%
San Benito County

Regional Housing Needs Allocation

By considering the RHNA goals in relationship to housing stock since the plans inception, and understanding of progress toward achieving this goal can be inferred.

% Towards achieving RHNA goals as of 2018



28%
Monterey Bay Region



25%
Monterey County



26%
Santa Cruz County



38%
San Benito County

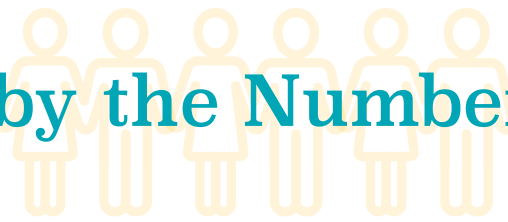
We invite you to learn more and explore the complete interactive dashboard at our website www.mbep.biz. Complete source information and applicable data notes are available on the online Monterey Bay Regional Dashboard



Monterey Bay
ECONOMIC PARTNERSHIP

We all have a role to play. Many indicators can't be solved without addressing drivers of another.

Monterey Bay Region by the Numbers



Who are we?

The Monterey Bay region isn't just one story. It is:



3 counties



4111 square miles



777,360 individual stories *

*as of 2017



Overall population

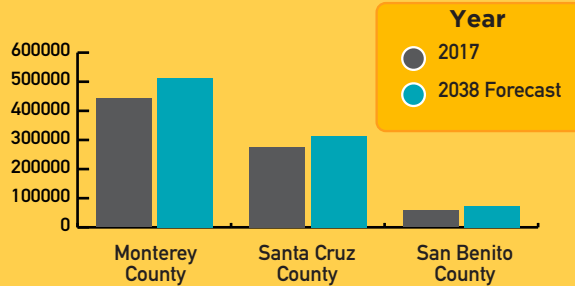
Monterey Bay region

2017:

777,360

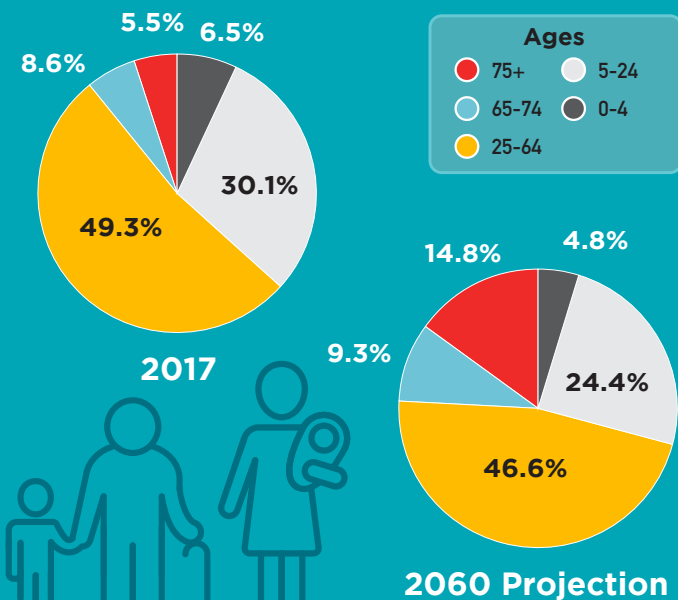
2038 Forecast:

898,418



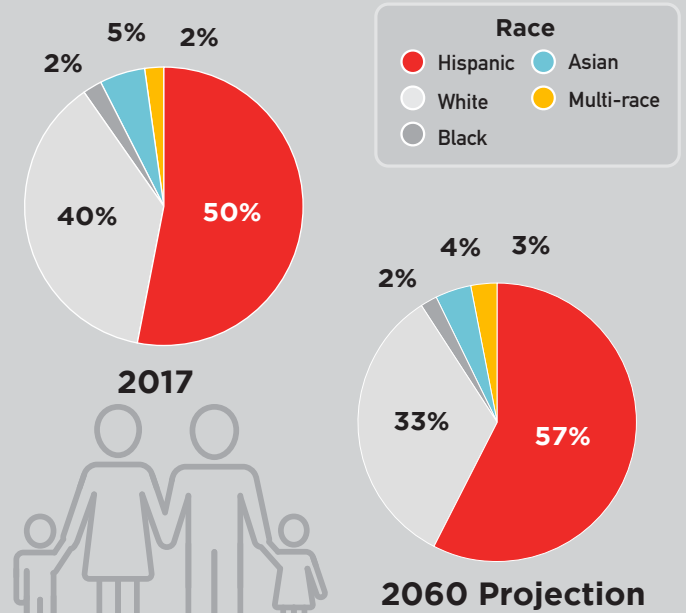
Population by age range

Monterey Bay region



Population by ethnicity

Monterey Bay region



Monterey Bay
ECONOMIC PARTNERSHIP

We all have a role to play. Many indicators can't be solved without addressing drivers of another.